

# Creating a Domain Controller

In Active Directory, Server 2003

Created By: Scott Campbell

# Overview

Creating a Windows 2003 domain controller (DC) consists of installing the Active Directory (AD) option to an existing Win2k3 server in a Network Manager configuration. Since AD requires a Domain Naming Service (DNS), the Windows DNS option will also be installed on the first domain controller during the AD installation. The DNS option will be added to subsequent domain controllers after AD installation.

# Installation of Domain Controller

On the Manager Your Server Screen that will come up when the server is first logged into. Click **ADD** or **REMOVE** a role.

**Manage Your Server**  
Server: ABBTESTDC1

**Adding Roles to Your Server**  
Adding roles to your server lets it perform specific tasks. For example, the file server role enables your server to share files. To add a role, start the Configure Your Server Wizard by clicking Add or remove a role.

**Managing Your Server Roles**  
After you have added a role, return to this page at any time for tools and information to help you with your daily administrative tasks.

No roles have been added to this server. To add a role, click Add or remove a role.

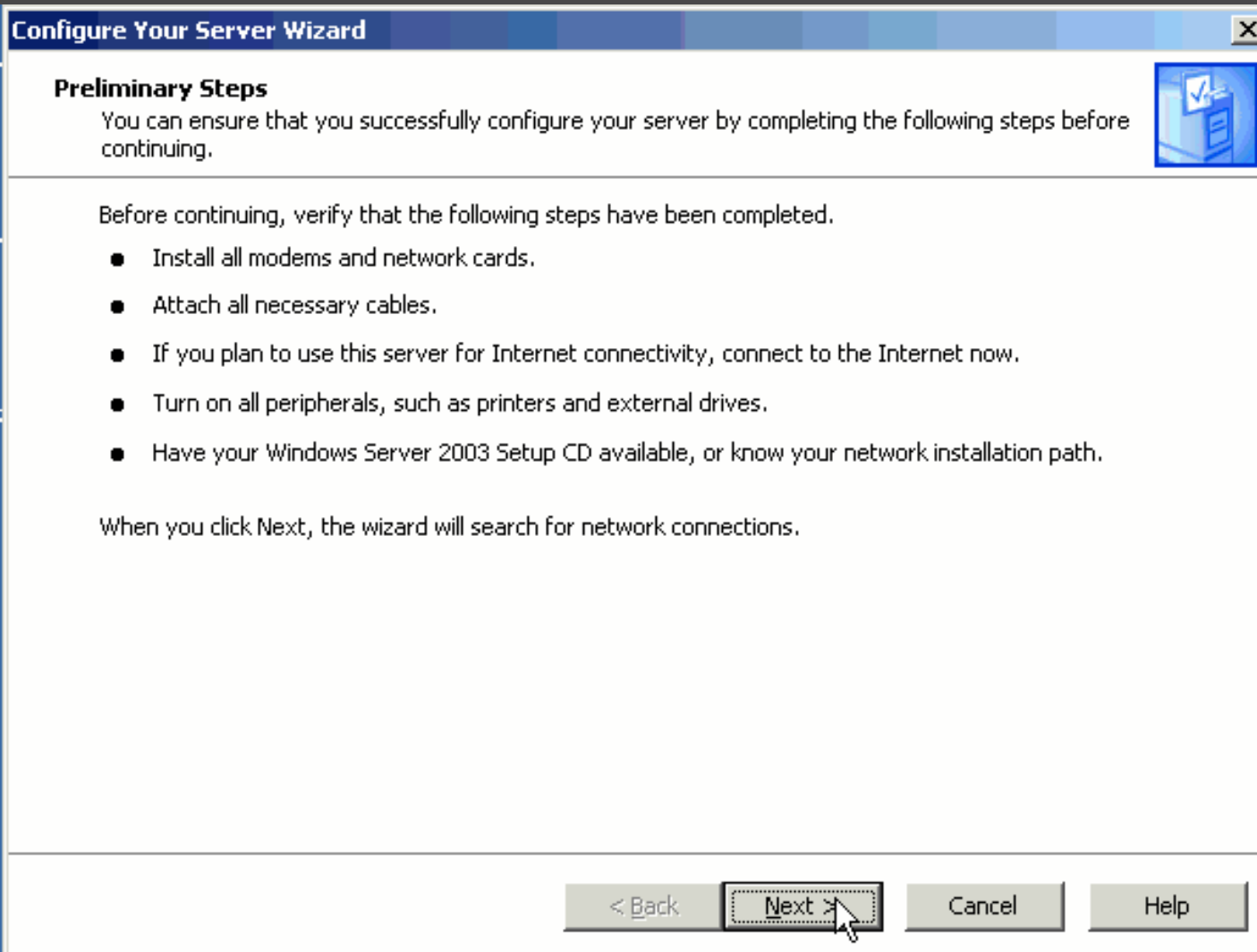
Don't display this page at logon

**Tools and Updates**

- Administrative Tools
- More Tools
- Windows Update
- Computer and Domain Name Information
- Internet Explorer Enhanced Security Configuration

**See Also**

- Help and Support
- Microsoft TechNet
- Deployment and Resource Kits
- List of Common Administrative Tasks
- Windows Server Communities
- What's New
- Strategic Technology Protection Program



➤ Click Next

## Configure Your Server Wizard

### Configuration Options

You can add a common set of roles to this server, or you can customize this server by specifying the roles to add or remove.



Configure this server using:

Typical configuration for a first server

Simplify the setup of a new network by adding a common set of roles for a first server. This option sets up this server as a domain controller by installing the Active Directory directory service and installs DNS server and DHCP server (if required) for IP address management.

Custom configuration

Customize this server by adding the roles, such as file server, print server, or application server, that you want it to perform. You can also use this option to remove existing roles from this server.

< Back

Next >

Cancel

Help

➤ Click *CUSTOM CONFIGURATION* and Click *NEXT*

## Configure Your Server Wizard

### Server Role

You can set up this server to perform one or more specific roles. If you want to add more than one role to this server, you can run this wizard again.



Select a role. If the role has not been added, you can add it. If it has already been added, you can remove it. If the role you want to add or remove is not listed, open [Add or Remove Programs](#).

Server Role	Configured
File Server	No
SharePoint Services	No
Print Server	No
Application server (IIS, ASP.NET)	No
Mail server (POP3, SMTP)	No
Terminal server	No
Remote access / VPN server	No
<b>Domain Controller (Active Directory)</b>	No
DNS server	No
DHCP server	No
Streaming media server	No
WINS server	No

### Domain Controller (Active Directory)

Domain controllers store directory data and manage user logon processes and directory searches.

[Read about domain controllers](#)

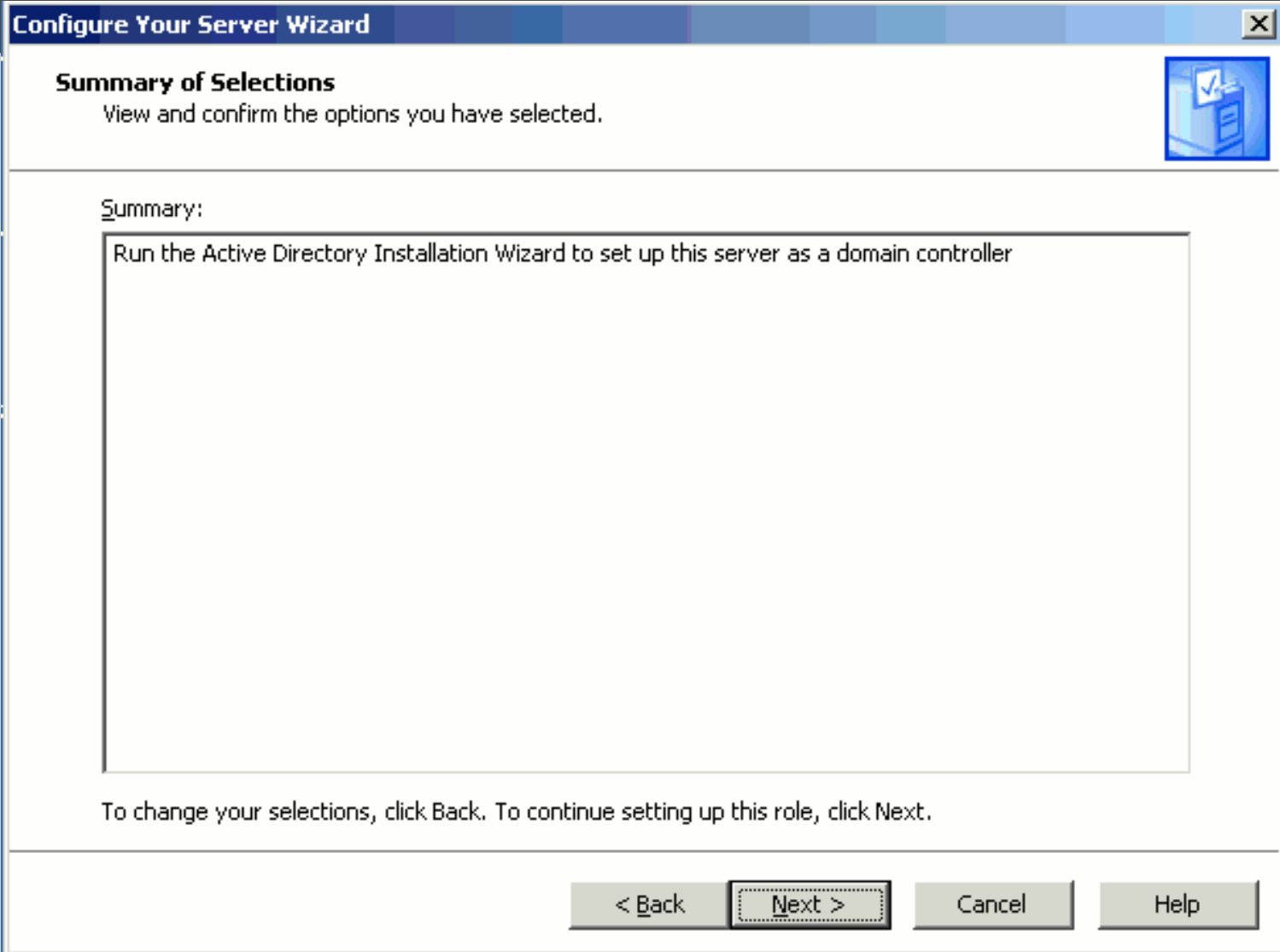
< Back

Next >

Cancel

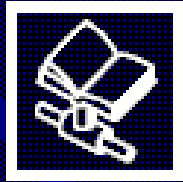
Help

➤ Select Domain Controller (Active Directory) and click **NEXT**



➤ Click *NEXT*

## Active Directory Installation Wizard



# Welcome to the Active Directory Installation Wizard

This wizard helps you install Active Directory services on this server, making the server a domain controller.

If this is the first time you have installed Active Directory, it is recommended that you first read the overview in [Active Directory Help](#).

To continue, click Next.

< Back

Next >

Cancel



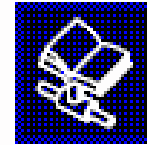
Click *NEXT*

## Active Directory Installation Wizard



### Operating System Compatibility

Improved security settings in Windows Server 2003 affect older versions of Windows.



Domain controllers running Windows Server 2003 implement security settings that require clients and other servers to communicate with those domain controllers in a more secure way.

Some older versions of Windows, including Windows 95 and Windows NT 4.0 SP3 or earlier, do not meet these requirements. Similarly, some non-Windows systems, including Apple Mac OS X and SAMBA clients, might not meet these requirements.

For more information, see [Compatibility Help](#).

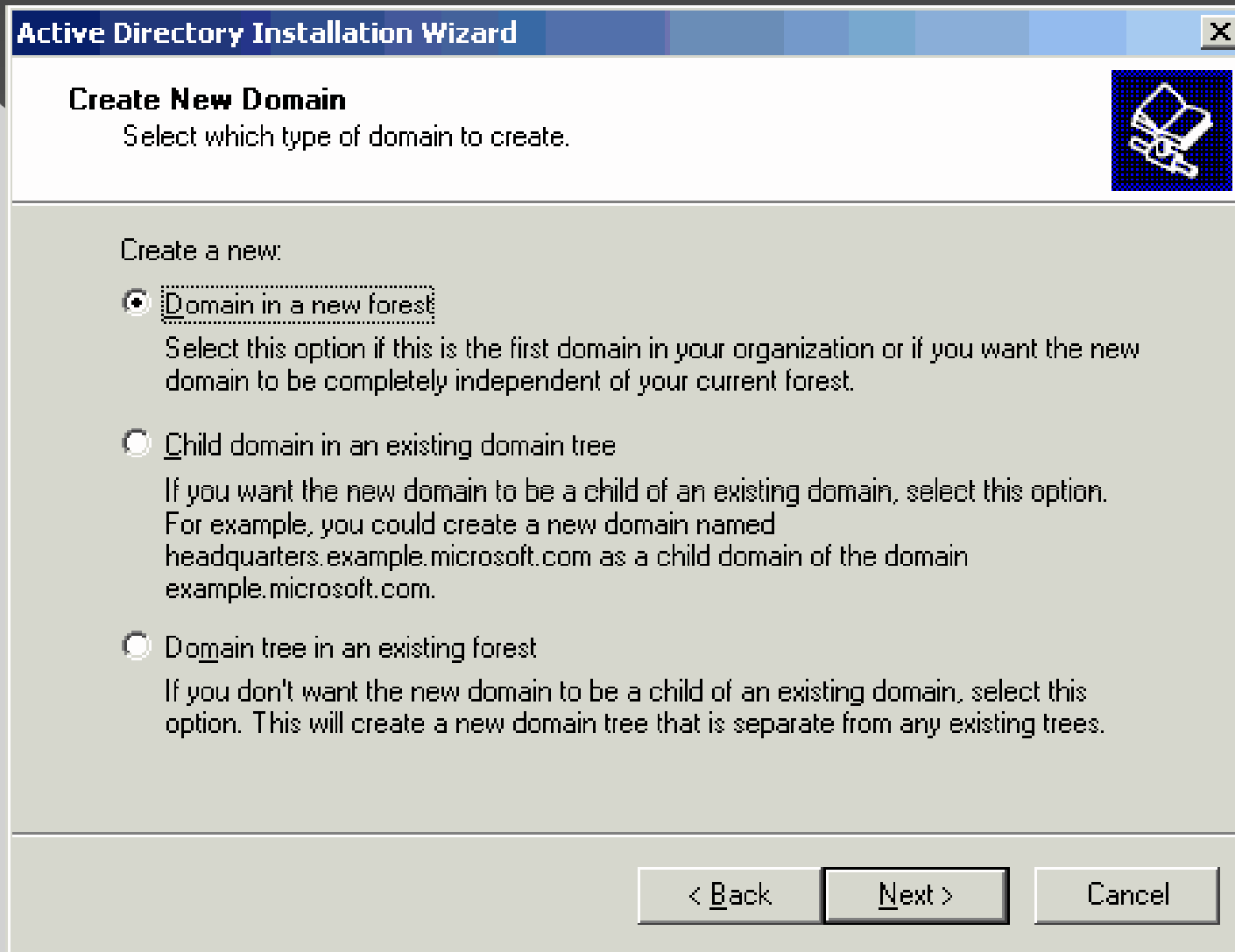
< Back

Next >

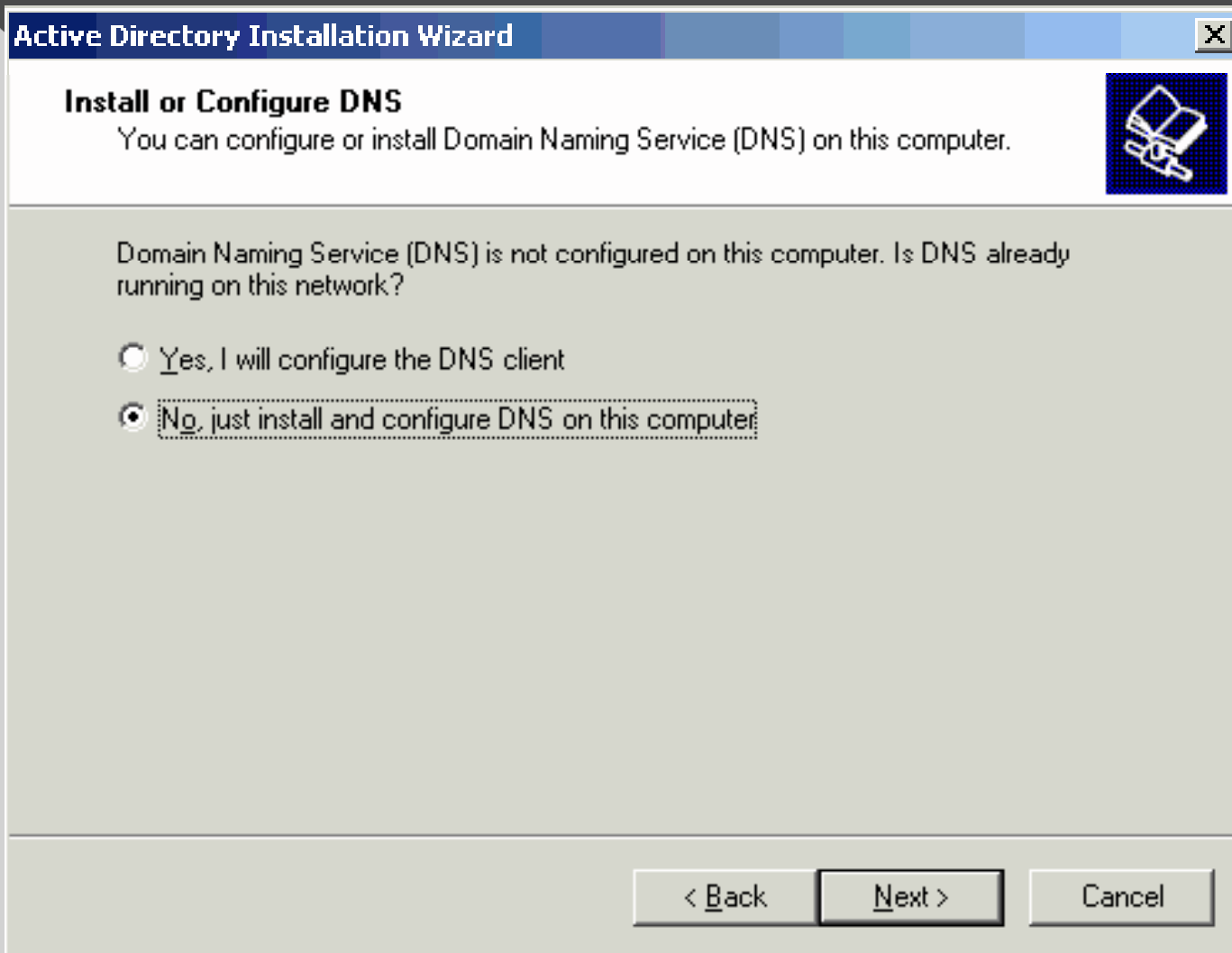
Cancel



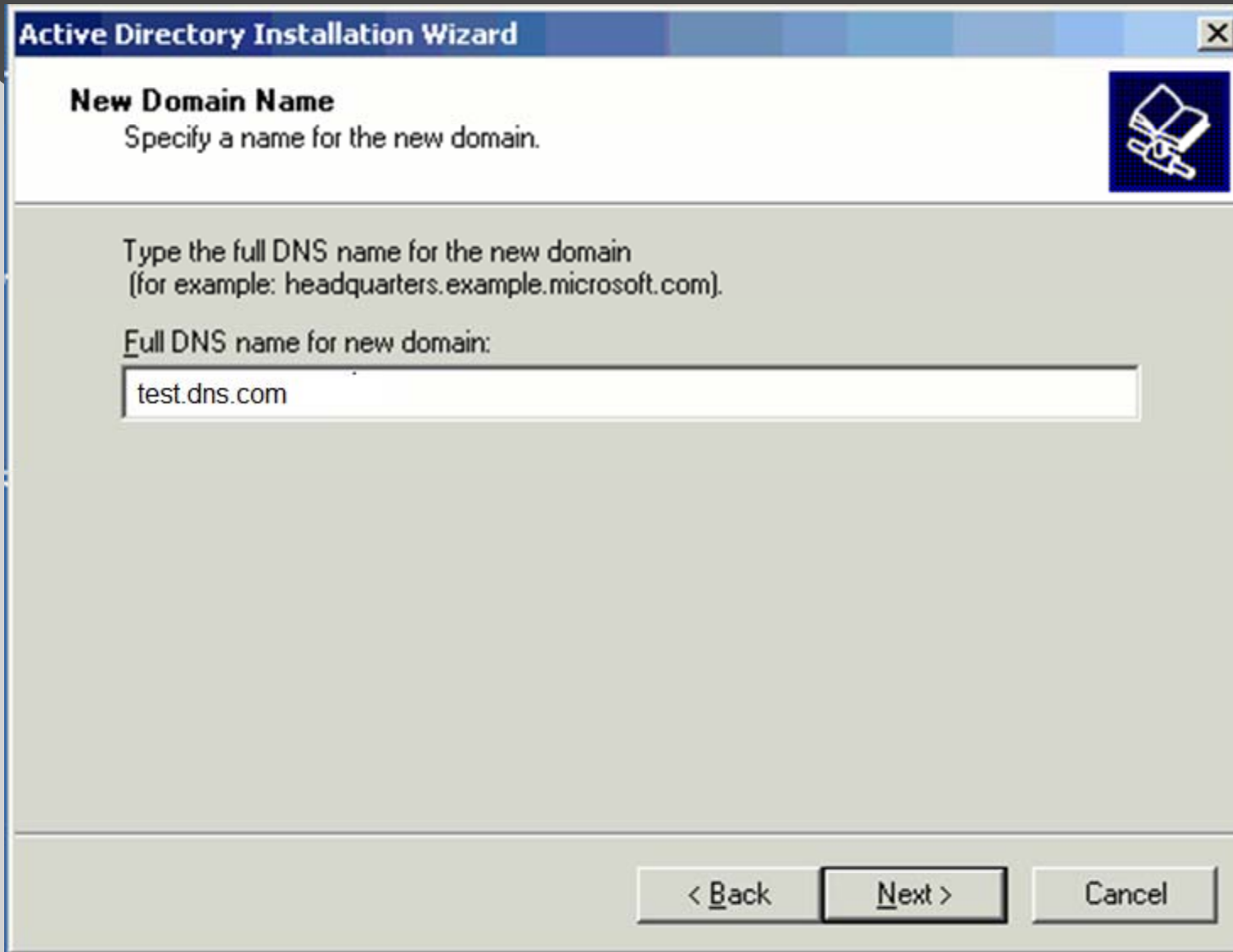
Click *NEXT*



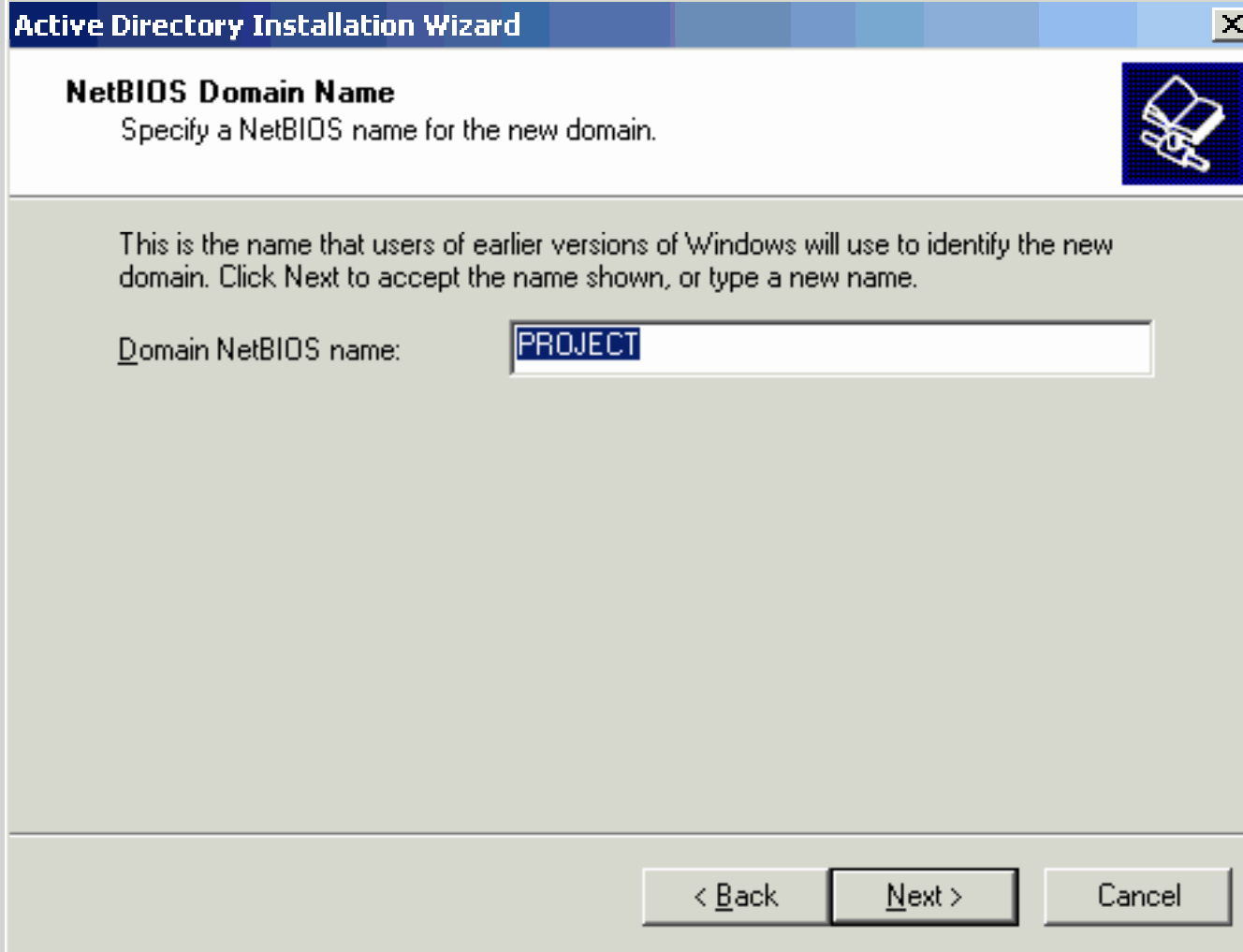
➤ Select Domain in a new Forest and click **NEXT.**



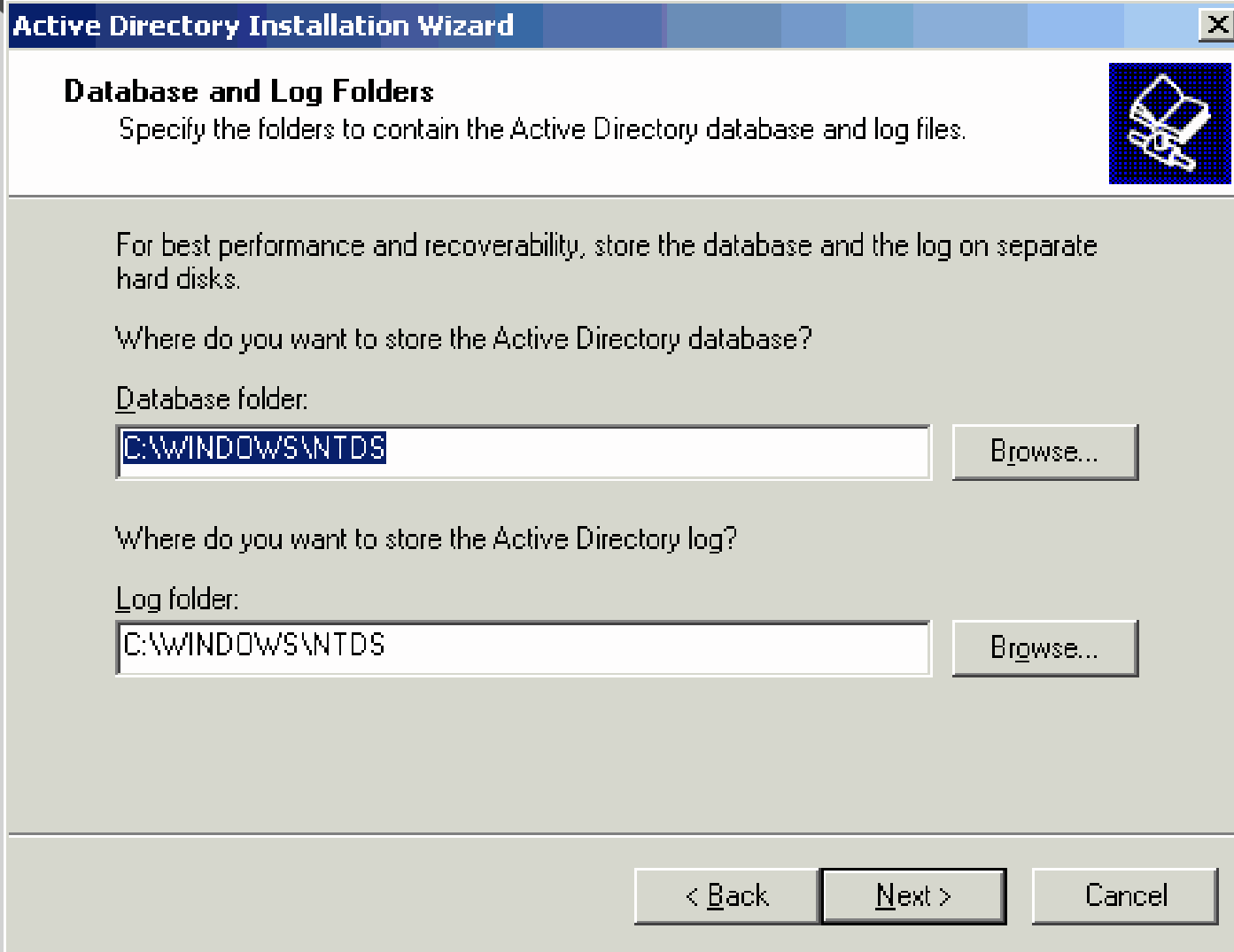
➤ Select No and click *NEXT*.



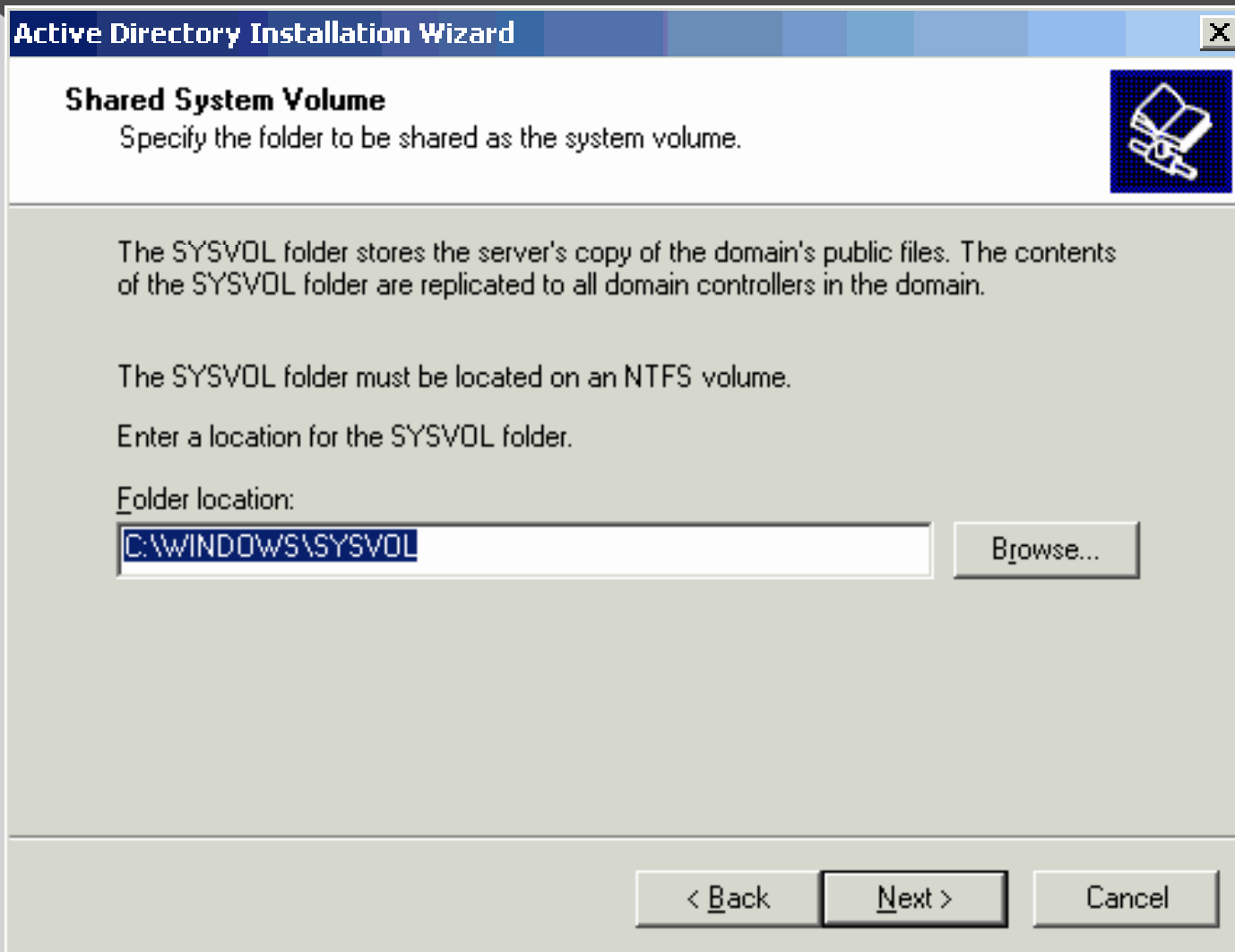
- Enter the DNS name for the Project and click **NEXT**.



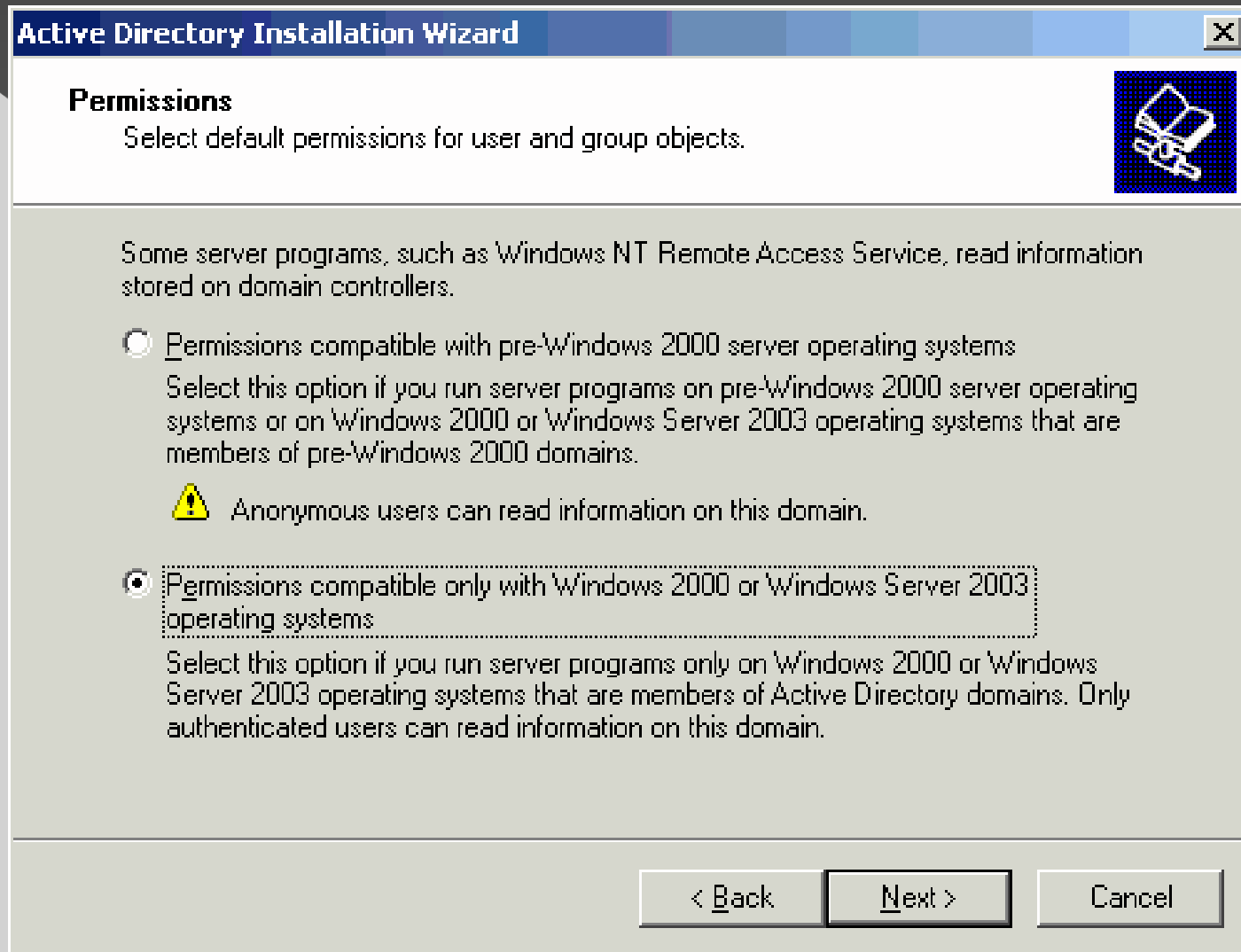
➤ Click *NEXT*



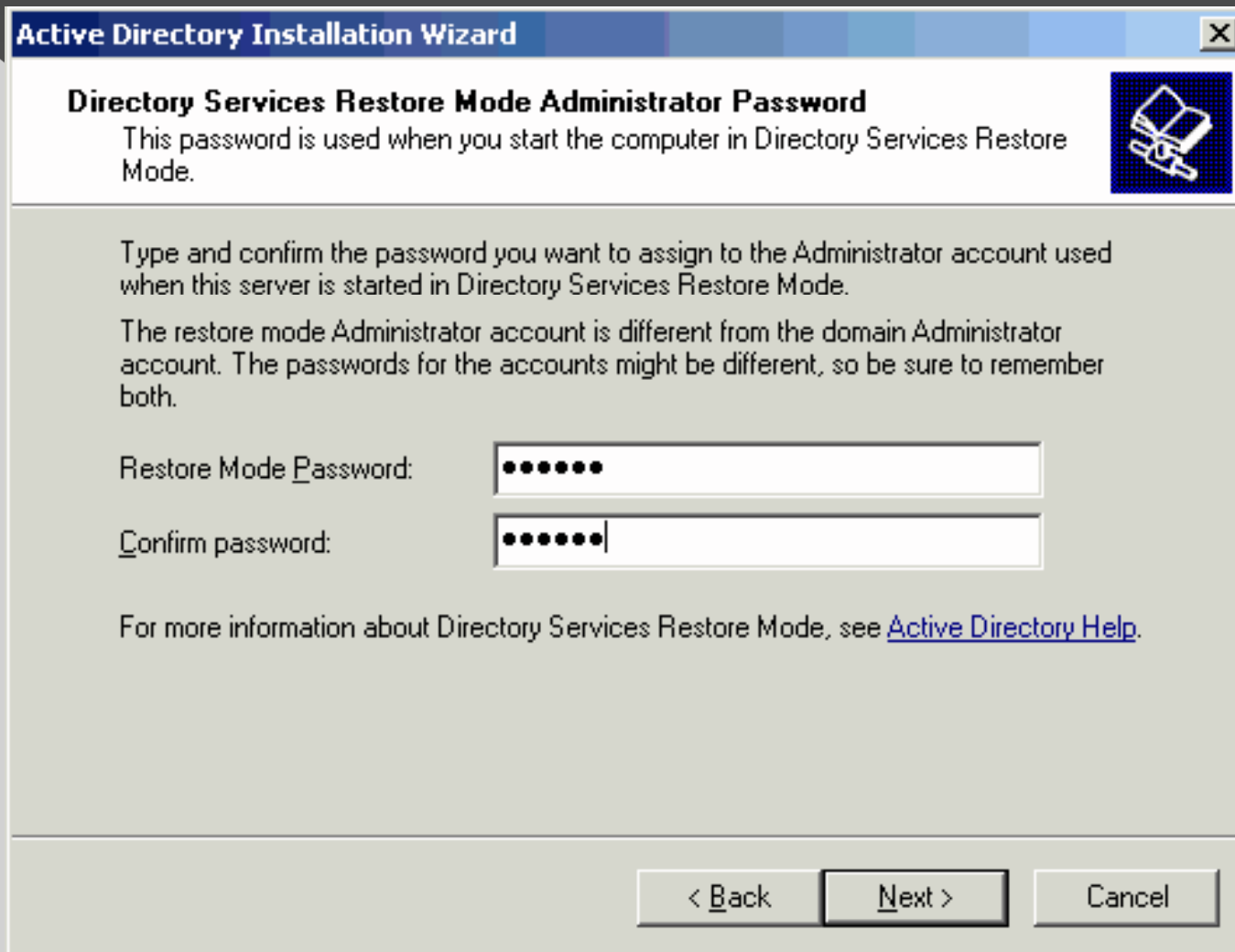
➤ Leave all defaults and click **NEXT**



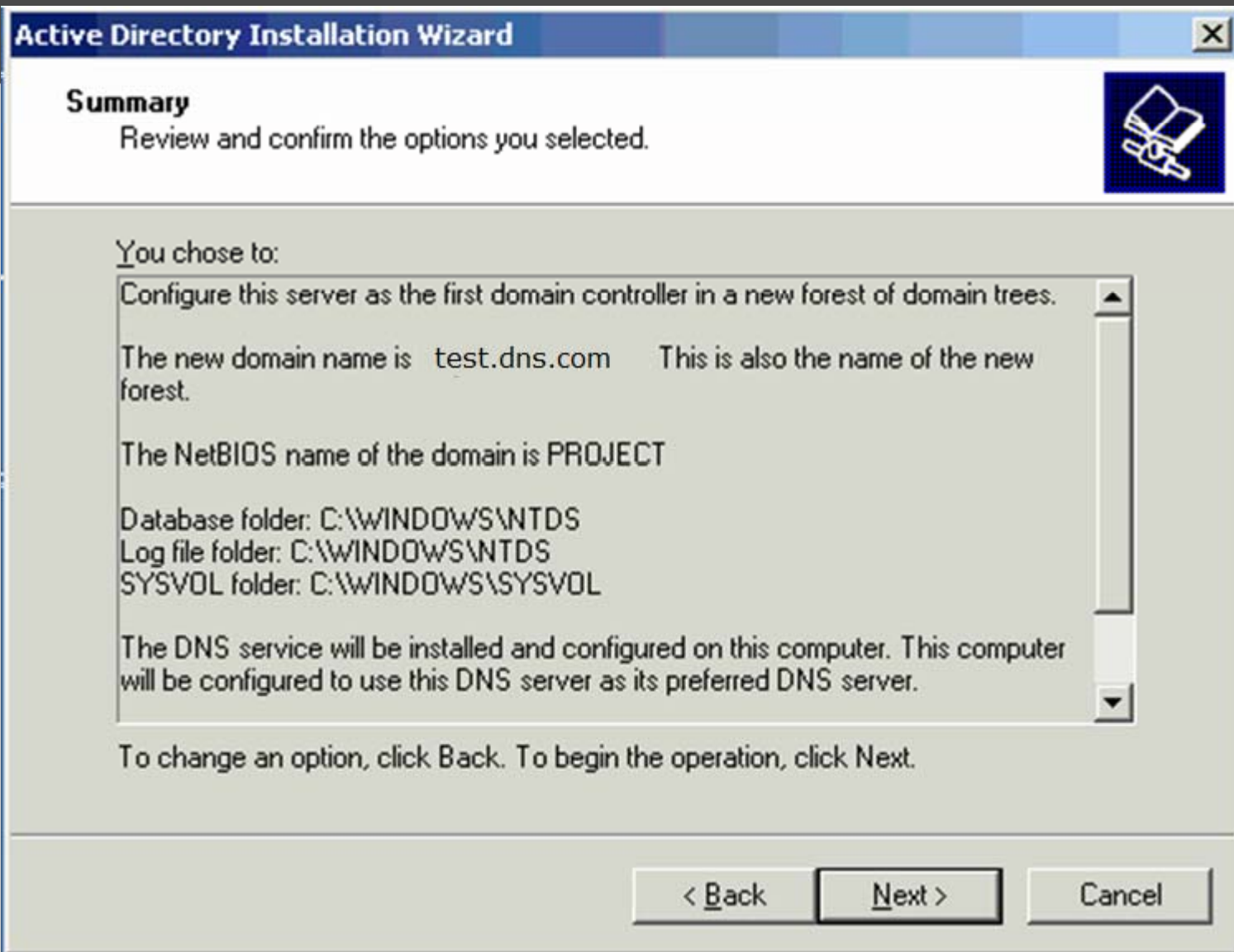
➤ Leave all defaults and click *NEXT*



- Ensure that Permissions compatible only with Windows 2000 or Windows Server 2003 operating systems is selected and click **NEXT**.



- Enter "Password!" into both boxes and click **NEXT**



➤ Review and click *NEXT*

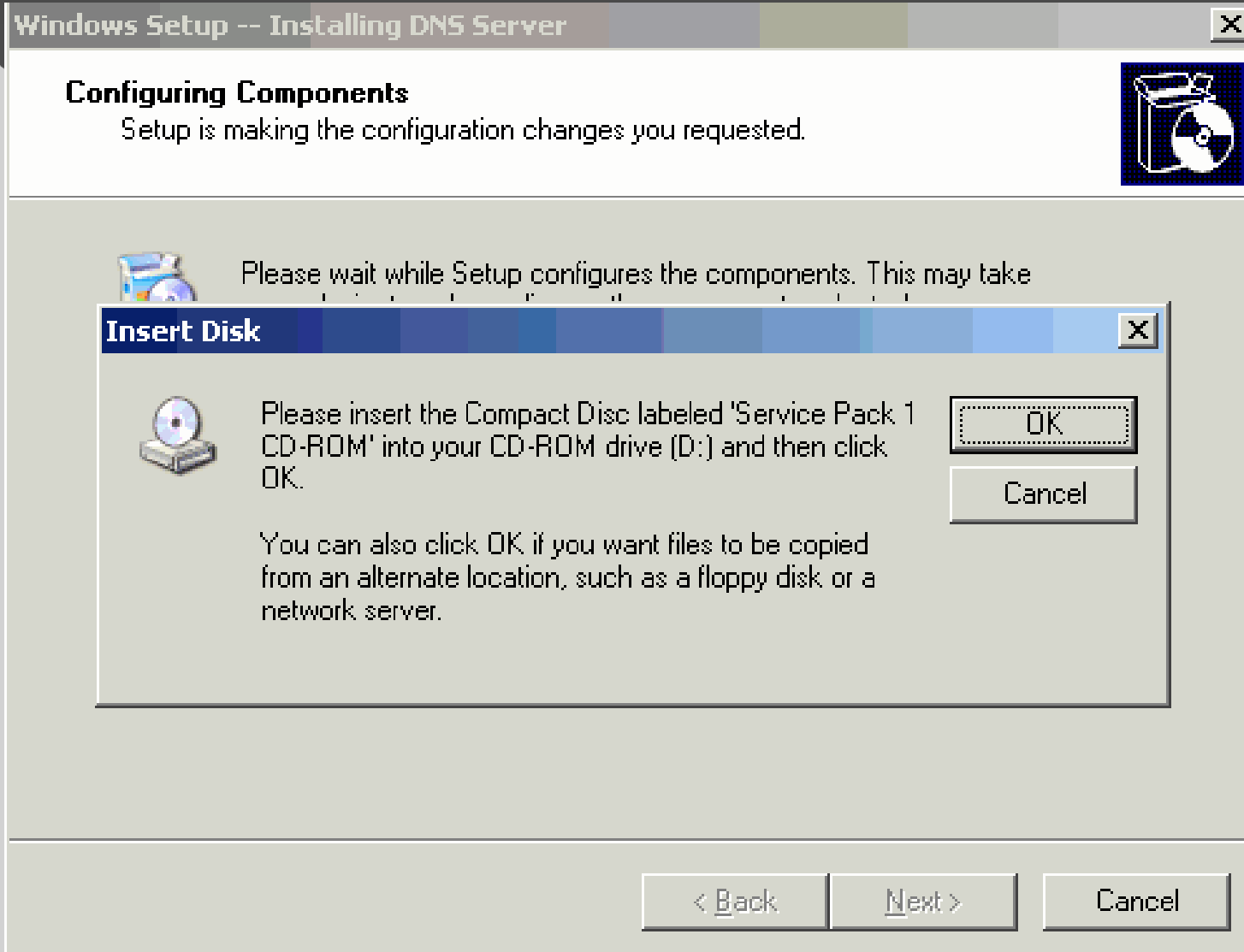
### Active Directory Installation Wizard

The wizard is configuring Active Directory. This process can take several minutes or considerably longer, depending on the options you have selected.



Starting...

- The following screen will popup and take several minutes to complete.



➤ When asked for the CD click *OK*

Windows Setup -- Installing DNS Server

### Configuring Components

Setup is making the configuration changes you requested.



#### Files Needed



Some files on Service Pack 1 CD-ROM are needed.

OK

Cancel

Insert Service Pack 1 CD-ROM into the drive selected below, and then click OK.

Copy files from:

C:\Drivers\i386

Browse...

< Back

Next >

Cancel

➤ Then enter `c:\drivers\i386` and click **OK**

## Active Directory Installation Wizard



### Completing the Active Directory Installation Wizard

Active Directory is now installed on this computer for the domain Project.abbrn.com.

This domain controller is assigned to the site Default-First-Site-Name. Sites are managed with the Active Directory Sites and Services administrative tool.

To close this wizard, click Finish.

< Back

Finish

Cancel



Click *FINISH*



➤ Click *RESTART* Now.

# Congratulations

You have now successfully set up a  
Domain Controller in Active Directory.

Created By: Scott Campbell

For: Internet Application Development

Prof: Ron Viseh