



# Configure IIS Server

# Configure an IIS Server Application

- Click the “Start” menu
- Choose “Manage Your Server”
- Click “Add or remove role”
- Follow the prompt by clicking “Next”

The screenshot shows the 'Manage Your Server' console window. The main area displays 'Adding Roles to Your Server' with a green arrow pointing to the 'Add or remove a role' button. Below this, the 'Managing Your Server Roles' section shows the 'Configure Your Server Wizard' with 'Preliminary Steps' and 'Configuration Options'. The 'Configuration Options' section has two radio buttons: 'Typical configuration for a first server' and 'Custom configuration'. The 'Custom configuration' option is selected and highlighted with a dashed box. At the bottom of the wizard, the 'Next >' button is highlighted with a blue box.

- Choose “Custom configuration”
- Click “Next”

# Configure an IIS Server Application

- Choose “Application server (IIS, ASP.NET)”

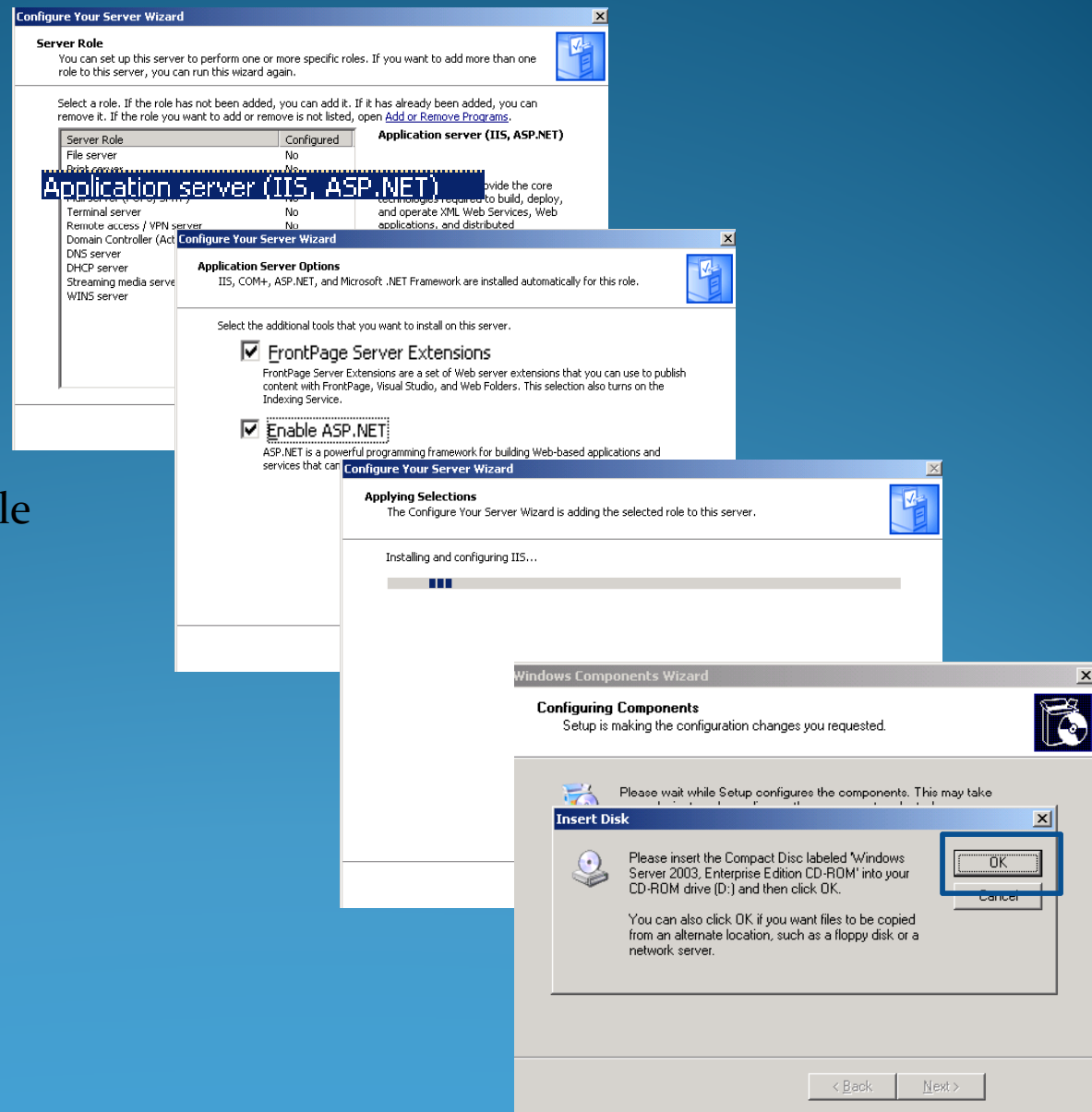
- Click “Next”

- Make sure that “FrontPage Server Extensions” & “Enable ASP.NET”

- Click “Next”

During the installation, an “Insert Disk” menu prompt will appear.

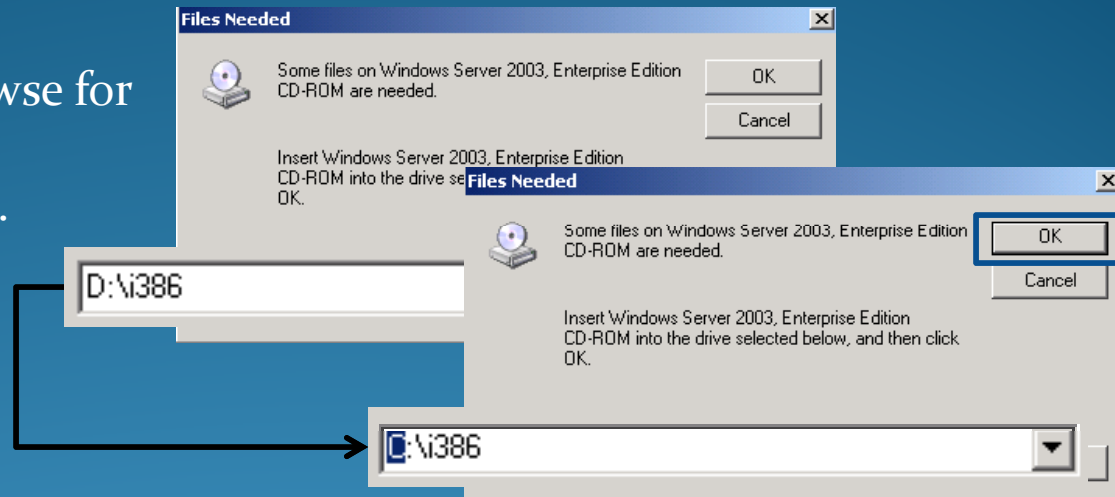
- Click “OK”



# Configure an IIS Server Application

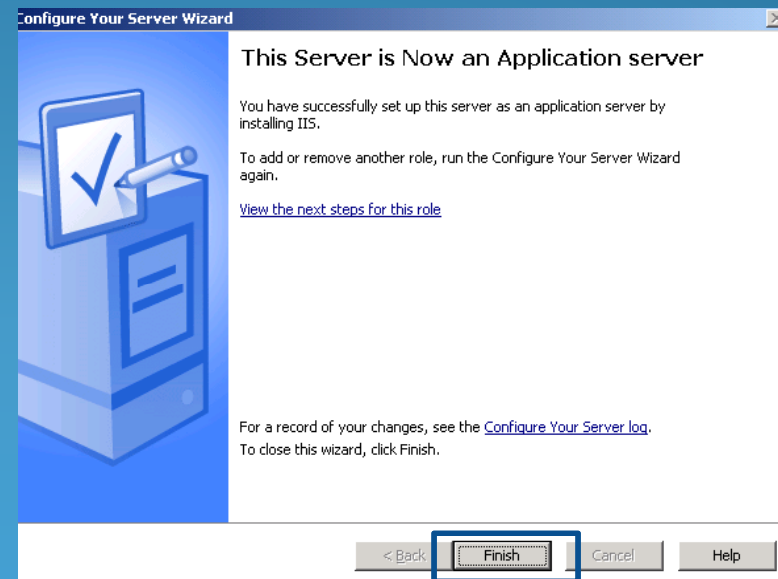
You will be prompted to browse for the Windows Server 2003 Enterprise Edition CD-ROM.

- Change the directory from D:\ to C:\
- Click “OK”



This server is now configured as an application IIS server; however, there are a few adjustments to ensure full functionality.

- Click “Finish”



# Make a Desktop IIS Icon

