



How to Install and Configure: Microsoft Server 2003 on Microsoft Virtual PC 2007

(for a web server appliance)



Microsoft Virtual PC 2007

Download and Unzip Virtual Server Files

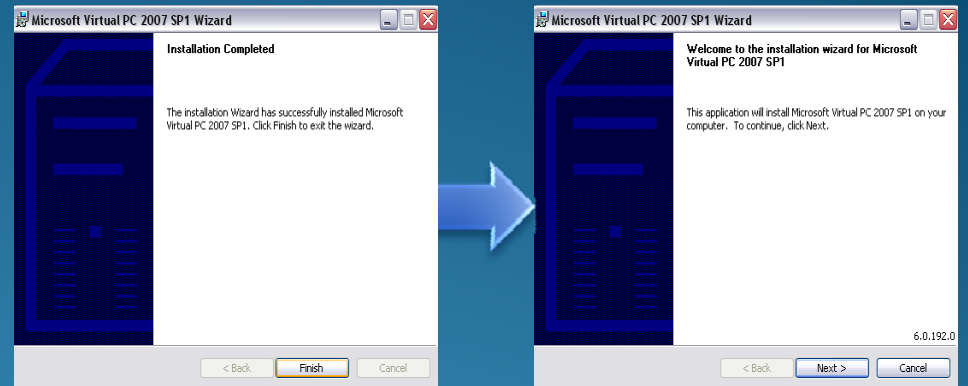
- Copy the files from the in-class DVD to your computer in a new folder called “Virtual Web Server”
- Unzip the “VirtualPC2007” folder to the current location.
 - Right click “VirtualPC2007”
 - Choose “Extract All”
 - Click “Next” until completed

• Open the unzipped “VirtualPC2007” folder

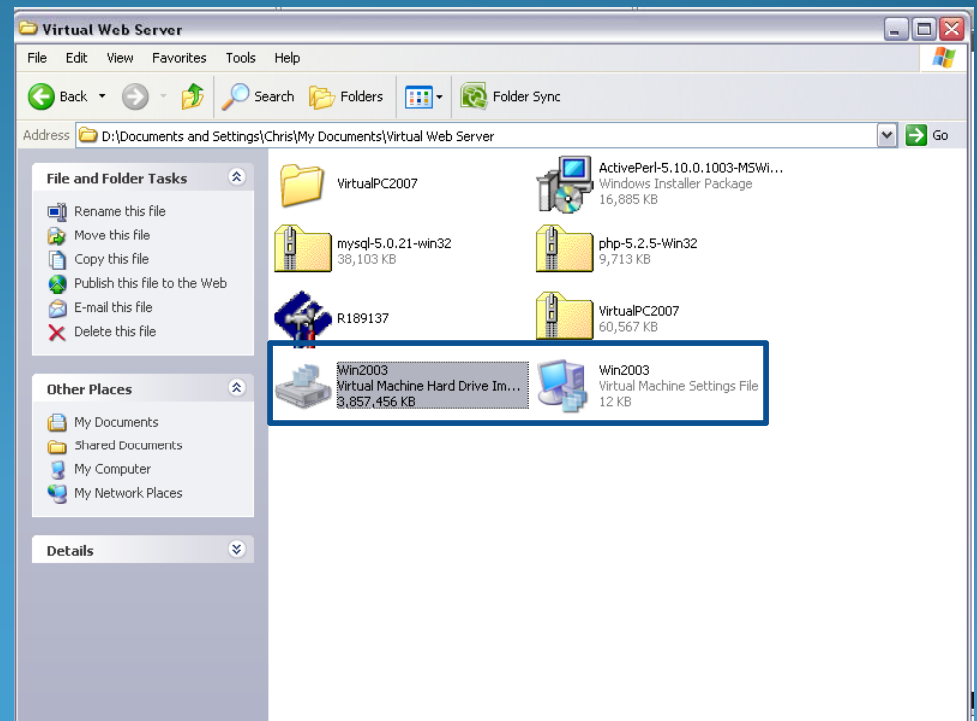
• Double click “setup_SP1” to install MS Virtual PC

Install Microsoft Virtual PC

Installation of MS Virtual PC will occur. Following the steps until installation is complete.

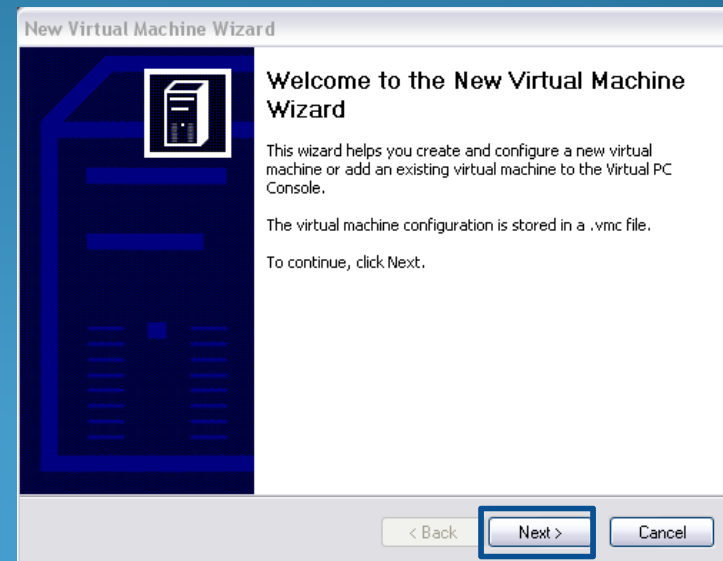
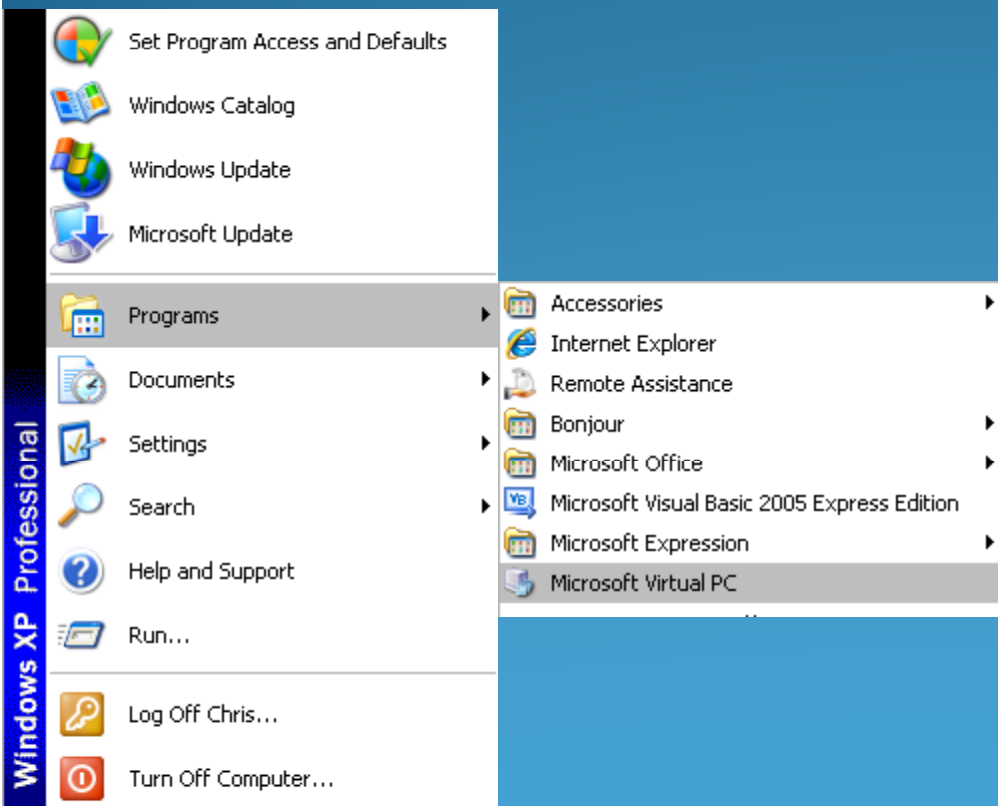
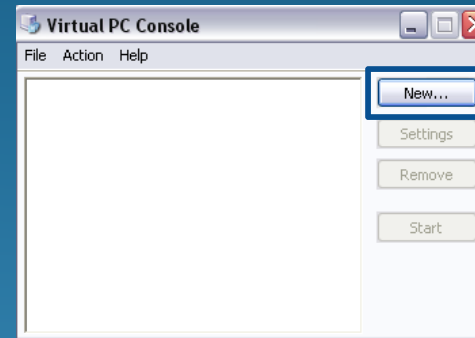


NOTICE: After Installation of MS Virtual PC the file icons in the Virtual Web Server folder have changed



Open Microsoft Virtual PC

- Open Microsoft Virtual PC
- Click “New Machine”
- Hit “Next” on the Welcome prompt



Open an Existing Virtual Machine

The image shows a sequence of three overlapping windows from the VMware Workstation interface, illustrating the steps to add an existing virtual machine:

- Top Window: New Virtual Machine Wizard - Options**
 - Section: **Options**
You can create a new virtual machine or add an existing one to the Virtual PC Console.
 - Section: **Select an option:**
 - Create a virtual machine
This option guides you through the basic configuration for the new virtual machine.
 - Use default settings to create a virtual machine
You can automatically create a .vmdk file from this computer or another computer to the Virtual PC Console.
 - Add an existing virtual machine**
You can add a virtual machine to the Virtual PC Console.

- Middle Window: Existing Virtual Machine Name and Location**
- Section: **Existing Virtual Machine Name and Location**
You can add a .vmdk file from this computer or another computer to the Virtual PC Console.
- Text: Name and location:
[Empty text box]
- Button: **Browse...**
- Bottom Window: Existing Virtual Machine Name and Location (File Explorer)**
- Look in: Virtual Web Server
- Content: Win2003 (selected)
- File name: Win2003
- Files of type: Virtual Machine Config
- Bottom-Right Window: New Virtual Machine Wizard - Completing the New Virtual Machine Wizard**
- Section: **Completing the New Virtual Machine Wizard**
- Text: You have successfully completed the New Virtual Machine Wizard and have added an existing virtual machine named: Win2003
- Checkbox: When I click Finish, open Settings
To close the wizard, click Finish.
- Buttons: < Back, **Finish**, Cancel

Annotations with arrows indicate the flow: from the 'Add an existing virtual machine' option to the 'Browse...' button, then to the 'Win2003' file in the file explorer, and finally to the 'Finish' button in the completion window.

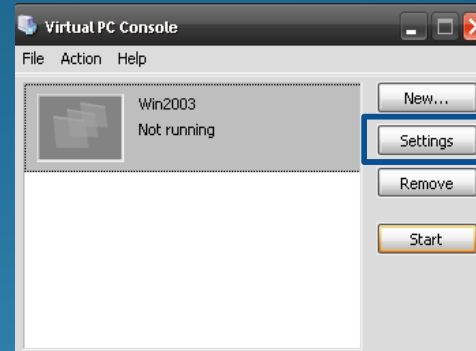
•Click “Add an existing virtual machine.”

•Click “Browse” and locate “Win2003” in the “Virtual Web Server” folder and click “Open”

•Click “Finish” to complete to Wizard

Configure Virtual Machine Settings

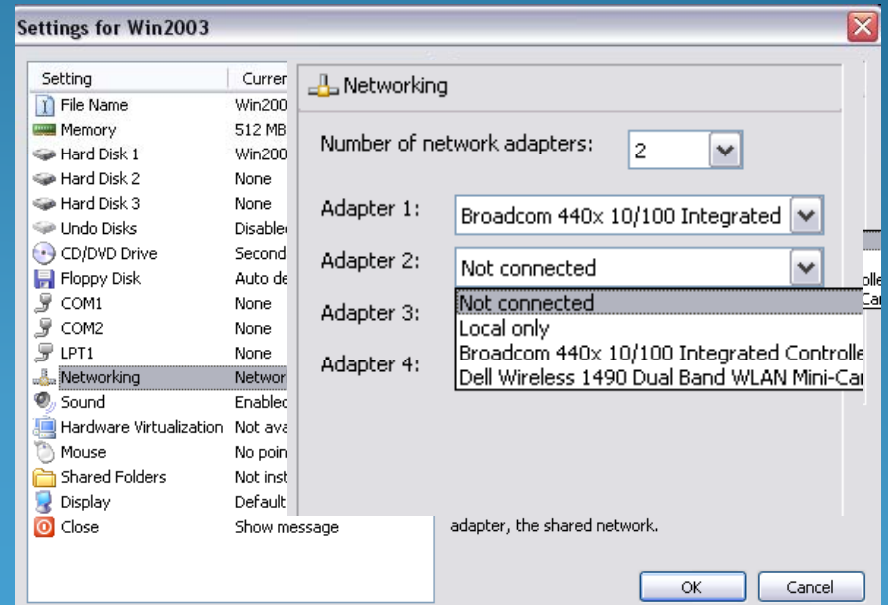
- Configure your VM to communicate with the Internet through a network device on your computer by clicking “Settings.”



If you have a wireless card, you might need to add this adapter in “Adapter 2.”

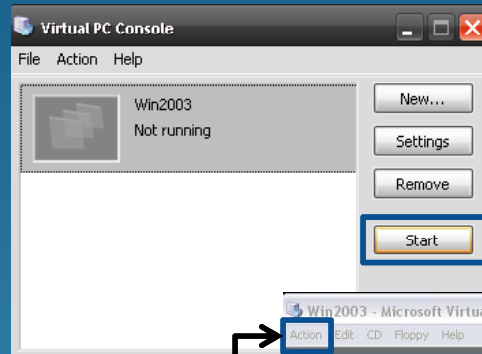
After installation of Virtual PC Add-ons, you will have more options available on the VM settings, like:

- Shared folders between the physical and virtual machine
- Display options



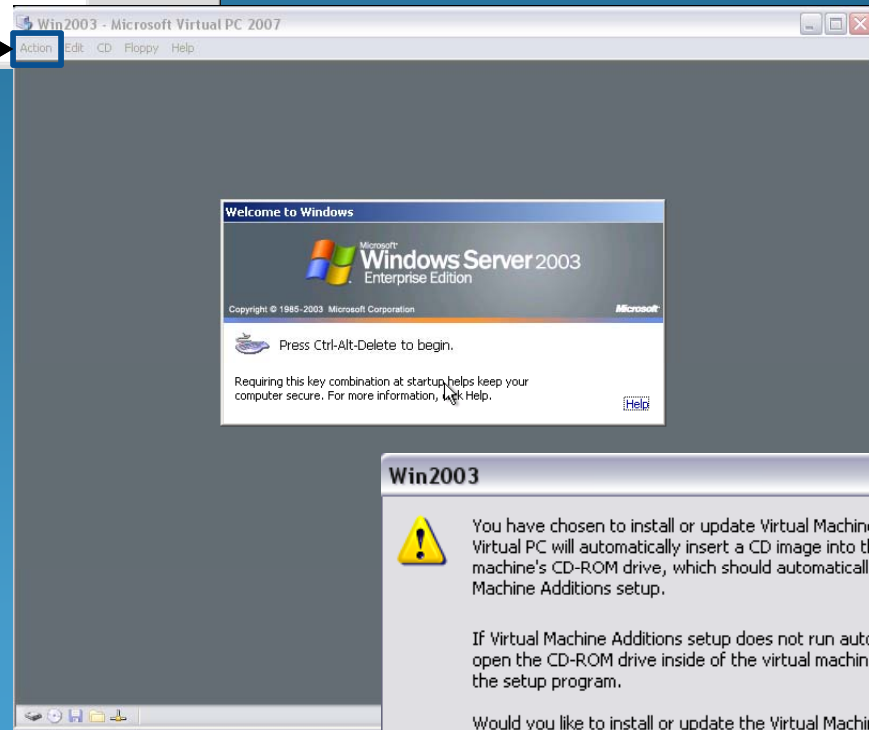
Start Virtual Machine "Win2003"

- Start "Win2003" by clicking "Start" on the Virtual PC Console

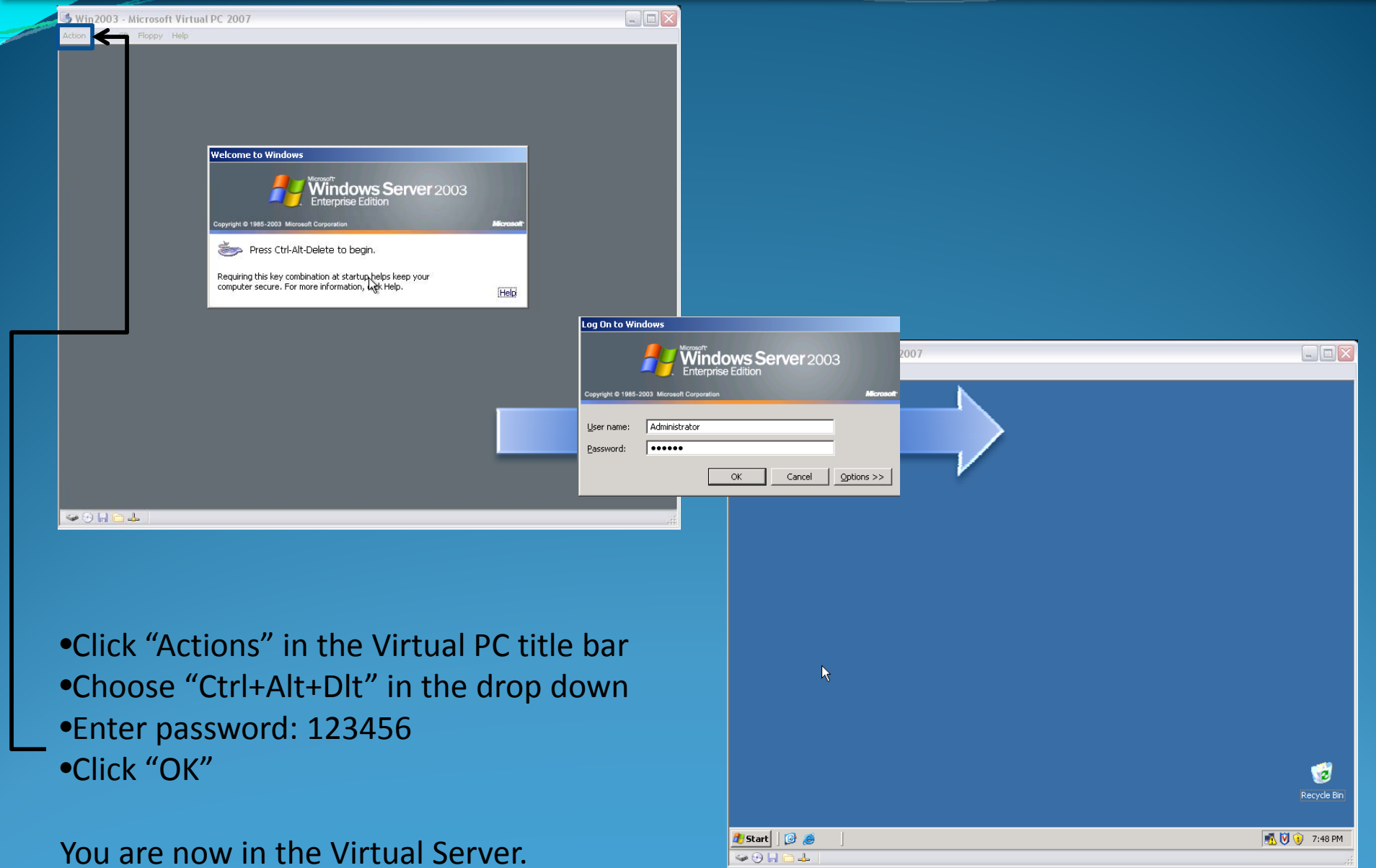


Before logging into the server: Install Add-Ons

- Click "Action" on the Virtual PC title bar
- Choose "Install or Update Virtual Machine Additions" in the drop down
- Click "Continue" on the exclamation pop up



Start Virtual Machine "Win2003"



The screenshot shows the Microsoft Virtual PC 2007 interface. The main window displays the 'Welcome to Windows' screen for Windows Server 2003 Enterprise Edition. A 'Log On to Windows' dialog box is open, prompting for a user name (Administrator) and password (123456). A blue arrow points from the dialog box to the right, indicating the next step in the process.

- Click "Actions" in the Virtual PC title bar
- Choose "Ctrl+Alt+Dlt" in the drop down
- Enter password: 123456
- Click "OK"

You are now in the Virtual Server.

Install Virtual Machine Additions

- Hold down the Window's Logo Button (on your keyboard) while you press letter "E" (on your keyboard)

This will initiate the "My Computer" explorer window

- Click on the CD Drive labeled "VMADDITIONS13..."

This will begin the installation of MS Virtual PC Additions.

- Click "Next" to go through the installation
- When prompted to restart, click "Yes."

